



**Charles M. Willie & Co (Shipping) Ltd**  
*Celtic House*  
 11-12 Neptune Court, Vanguard Way  
 CARDIFF, CF24 5PJ  
 Phone +44 2920 471000



### **m.v. CELTIC NAVIGATOR**

Built 2003  
 Yard Royal Bodewes, Holland  
 Flag British  
 Homeport Cardiff  
 IMO Number 9256169  
 Official Number 923965  
 Call Sign MEVN9

GT 2983 tons  
 NT 1646 tons  
 Displacement 5700 tons  
 DWAT Summer 4323 tons  
 DWCC Summer 4100 tons  
 DWCC Winter 4000 tons  
 Grain/Bale abt. 213,000 cbft

Main engine MAK 6M25  
 Max output 1800 kW  
 Shaft Generator Yes  
 Generators 2 of 140kW  
 Bow thruster 300 kW  
 Speed 11 knots BF 2  
 Consumption - sea 6 tons HFO per day  
 Consumption - port 0.4 tons gasoil per day

Ballast 1996 m3  
 Fuel - HFO 209 m3  
 Fuel - Gasoil 39 m3  
 Fresh water 60 m3

Class society DNV-GL  
 Class notation + 1A General Cargo Ship Ice 1B  
 Hull & Machinery London syndicates  
 P & I West of England

LOA 89.98 m  
 Beam 15.20 m  
 Depth 6.60 m  
 Max summer draft 5.10 m  
 Max winter draft 4.996 m  
 Draft in ballast 3.4 m  
 Airdraft in ballast 22.8 m masts up 13.6 m masts down

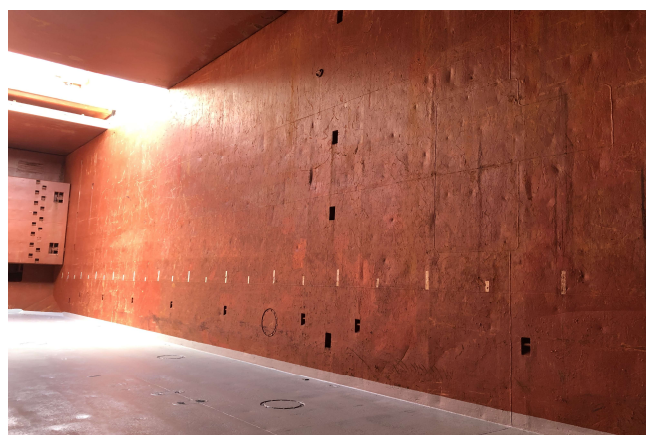
Hold/Hatch One with a strongbeam  
 Max hatch loading 1.6 tons per m2  
 Hatch dimensions 61.50 m by 12.60 m  
 Hold dimensions 61.50 m by 12.60 m by 7.99 m (h)  
 Hold narrows forward over last 8.1 metres to 8 m  
 Hatch type Roden Staal closed pontoon system  
 Bulkheads Two @ max three compartments  
 Bulkhead positions  
 Max tanktop loading 15 tons per m2

Height waterline to coaming in ballast 5.66 m  
 Height waterline to coaming laden 4.0 m

Dangerous goods fitted  
 Grain Fitted  
 Heavy cargo fitted  
 El Vent



Hold looking forward  
 Showing narrowing over 8.1 m to 8 m



Hold looking aft  
 Showing bulkhead stowing positions